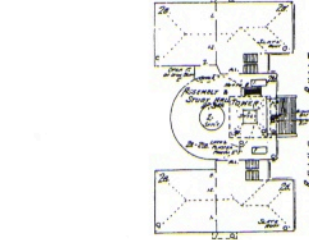


N. LOS ROBLES 33 AV.

32

HIGH SCHOOL

NEAR NEW BUS STOP SYSTEM, LEAVES ELECTRIC CITY CENTER TO HAVE TWO 1/2 BLOCKS FROM MAIN STREET. EACH FLOOR SURROUNDED BY HIGH WALKING CURBS. INTERIOR WALLS OF BRICK. NO STAIRS. NO CORRIDORS. REAR PORCH AND HOTEL CORNER BUILDING. CORNER MOST PARTS IN THE AREA.

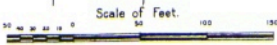
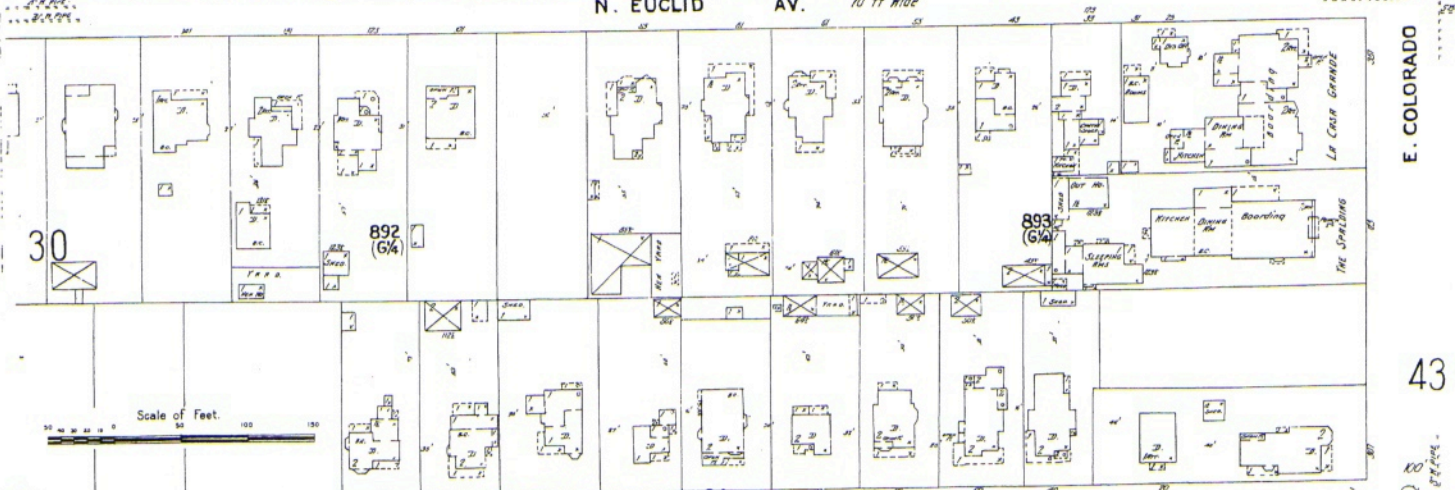
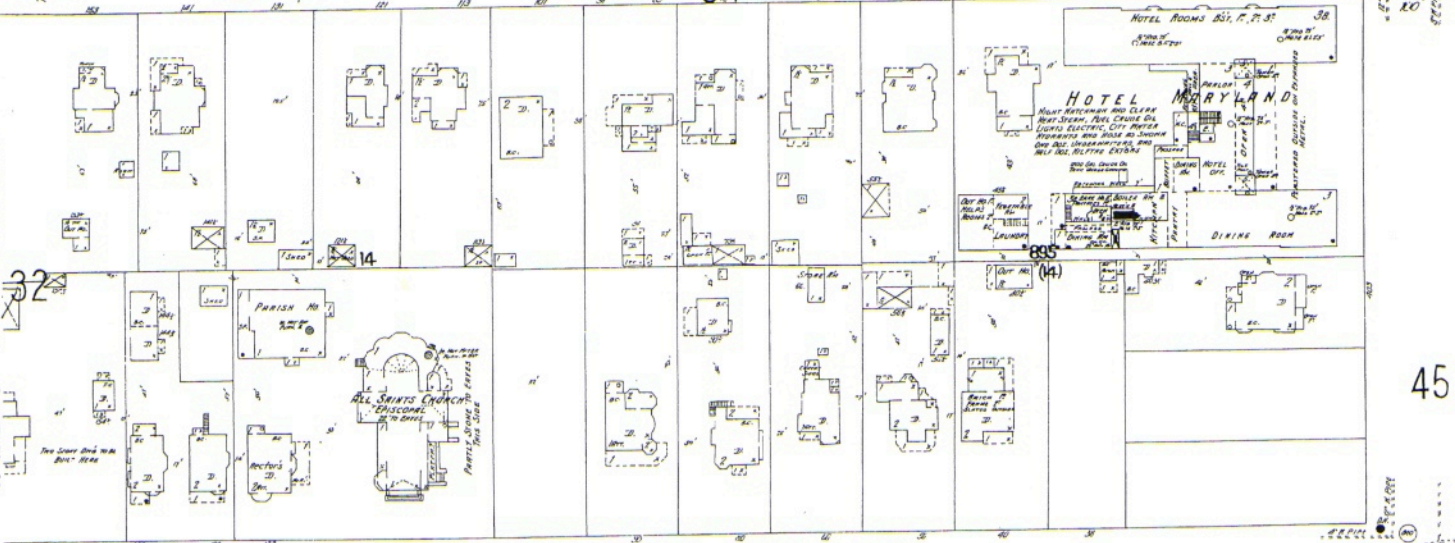
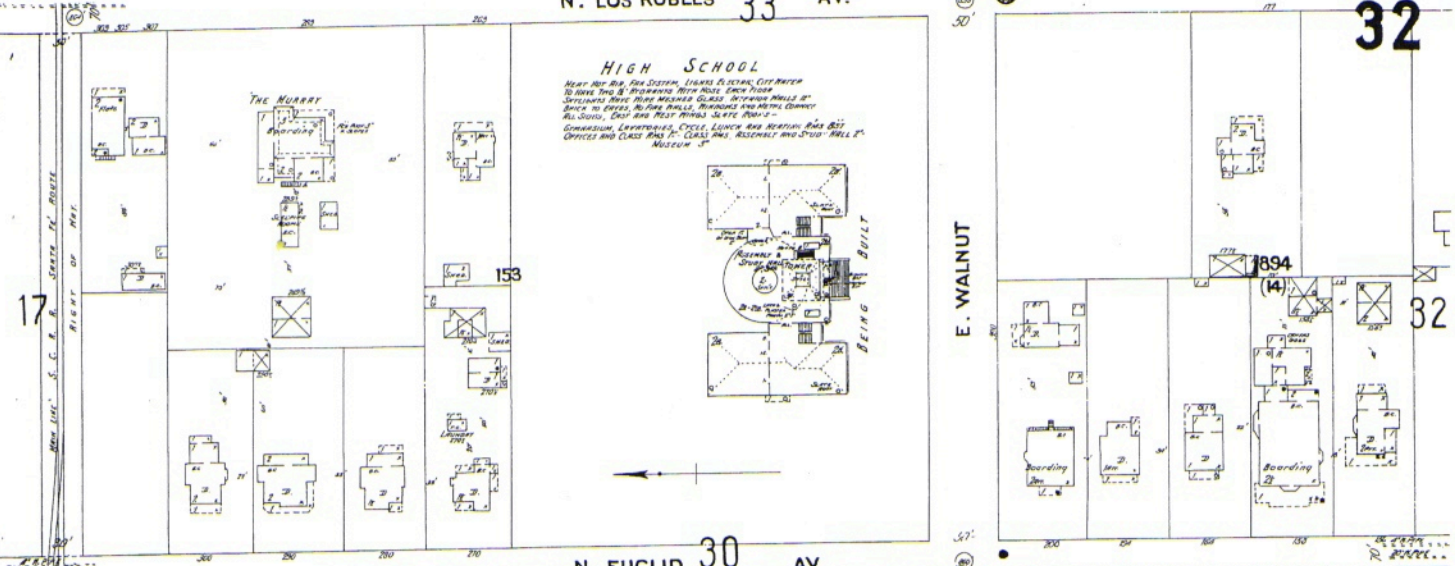


E. WALNUT

32

N. EUCLID 30 AV.

N. LOS ROBLES 34 AV.



E. COLORADO